

Breezewood Rentals llc

Heated Shop Spaces

7261 Commerce Plaza Drive - Neenah, WI 54956

PH: (920) 931-0017 FAX: (208) 275-1357

Email: Stacy.Perry@customcages.com

Breezewood Rentals heated shop and storage spaces are perfect for your startup or other small business or hobby shop as well as a place to park your collectable car, boat, or RV. All units come with in floor heat, floor drain, and a wash sink. All units also have bathroom access (common, shared, or single tenant depending on how many units you occupy). With 800 amps of total on site power, each unit has a 6 breaker electrical panel (3 phase, 220, and 120 available) to service any of your electrical needs. All units are approximately 14' x 48' - or 672 sq. ft. with 16' ceilings. Demising walls are removable, so if you want to combine two or more units into one big open unit - no problem.

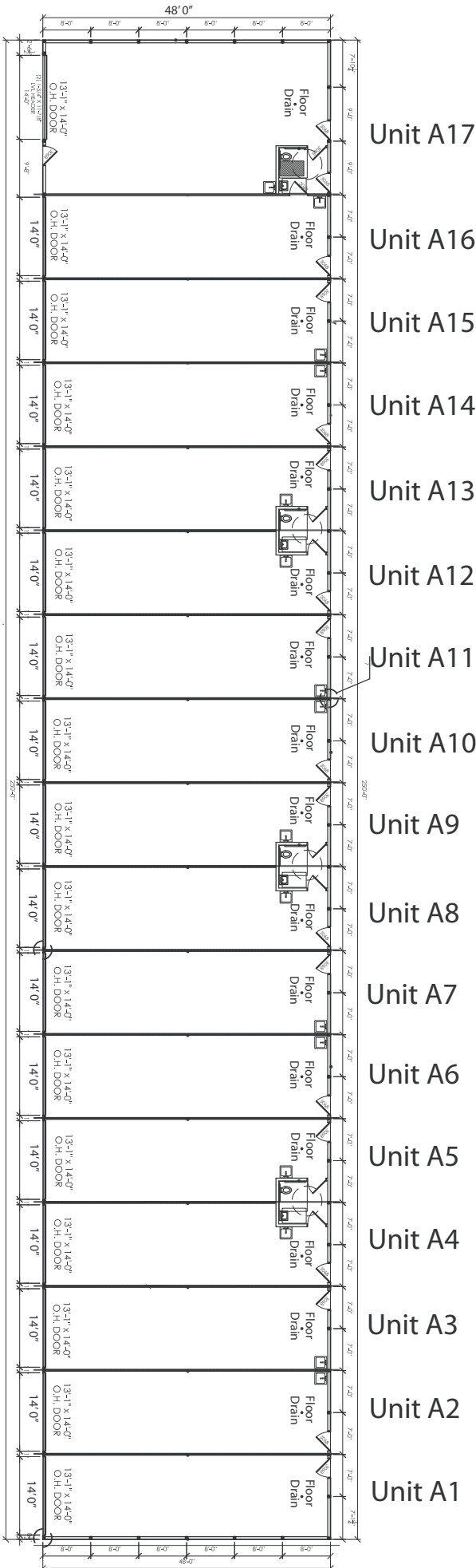
Based on intended usage, we have several flat rate rental options to choose from. Flat rate rental puts your mind at ease because heat, electric, water, taxes, snow plow etc. is all included. No need to guess what your expenses are going to be which can be a big headache for any small business. Terms are one year minimum with 90 days notice required thereafter. Here are the following usage categories and rates:

Usage Type	Avg. Min. Heat Level	Usage	In Person Payment Flat Rent Rate*	ACH / Credit Card or 12 mo Advance Save 5%**
Low Usage, Low Heat	40 deg.	Storage Only	\$350/mo	\$340/mo
Low Usage, High Heat	65 deg.	Storage Only	\$370/mo	\$360/mo
Moderate Usage, Low Heat	40 deg.	<25 Hrs. per Week	\$370/mo	\$360/mo
Moderate Usage, High Heat	65 deg.	<25 Hrs. per Week	\$390/mo	\$380/mo
High Usage, Low Heat	40 deg.	25-50 Hrs. per Week	\$390/mo	\$380/mo
High Usage, High Heat	65 deg.	25-50 Hrs. per Week	\$405/mo	\$395/mo
Custom usage/temperature ratings are available per customer basis.				
*Rates are for annual usage and cannot be changed on a monthly basis.				
**Pay monthly automatically with a credit card or ACH and receive approx. \$10 off. Or, pay 12 months in advanced in cash or check and receive approx. 5% off.				

These units are in high demand and rent quickly. We encourage you to call us and get on our waiting list if were full.

NOW FEATUREING SECURITY CAMERAS SURVEILING ENTIRE PREMISE!!!
(For all heated and mini units A-F)

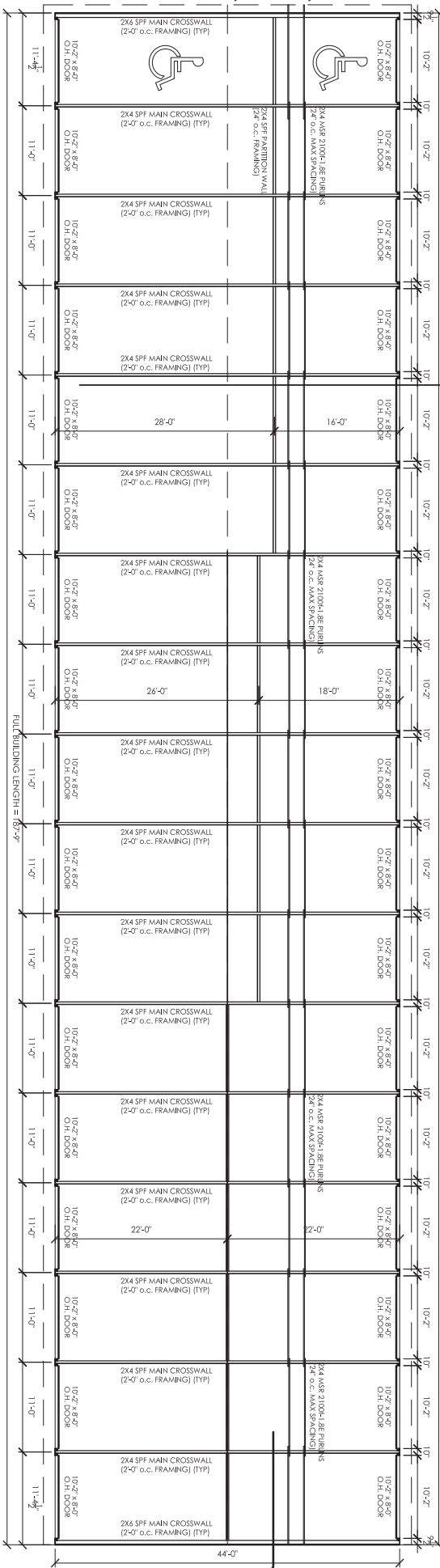
We have cameras pointing in virtually every direction looking at all of the entry/exit points as well as the overhead storage doors themselves. These high end cameras are state of the art, infrared (can see at night), and have forensic zoom capabilities. You will not find this level of security at most other facilities!



Located right next to Brezewood Heated Shop Rentals, Brezewood Mini Storage is a great solution to your cold storage needs with many sizes to choose from. 3 months minimum rentals, 2 months advanced deposit required.



Unit B34
Unit B33
Unit B32
Unit B31
Unit B30
Unit B29
Unit B28
Unit B27
Unit B26
Unit B25
Unit B24
Unit B23
Unit B22
Unit B21
Unit B20
Unit B19
Unit B18



Unit B17
Unit B16
Unit B15
Unit B14
Unit B13
Unit B12
Unit B11
Unit B10
Unit B9
Unit B8
Unit B7
Unit B6
Unit B5
Unit B4
Unit B3
Unit B2
Unit B1

Sizes and Rates Bldg B 8' Tall Doors				
Depth	Width	Door Height	In Person Payment Rate*	ACH / Credit Card or 12 mo Advance Save 5%**
10'	11'	8'	\$57	\$52
12'	11'	8'	\$65	\$60
14'	11'	8'	\$71	\$66
16'	11'	8'	\$74	\$69
18'	11'	8'	\$77	\$72
20'	11'	8'	\$79	\$75
22'	11'	8'	\$83	\$78
24'	11'	8'	\$85	\$81
26'	11'	8'	\$87	\$83
28'	11'	8'	\$93	\$89
30'	11'	8'	\$101	\$95
32'	11'	8'	\$107	\$101
34'	11'	8'	\$114	\$108
36'	11'	8'	\$120	\$114
44'	11'	8'	\$145	\$138

**Pay monthly automatically with a credit card or ACH and receive 5% off. Or, pay 12 months in advanced in cash or check and receive approx. 5% off.

Sizes and Rates Bldg D and F 10' Tall Doors				
Depth	Width	Door Height	In Person Payment Rate*	ACH / Credit Card or 12 mo Advance Save 5%**
16'	11'	10'	\$76	\$71
18'	11'	10'	\$80	\$75
20'	11'	10'	\$82	\$77
22'	11'	10'	\$86	\$81
24'	11'	10'	\$88	\$83
26'	11'	10'	\$90	\$85
28'	11'	10'	\$96	\$91
32'	11'	10'	\$115	\$110

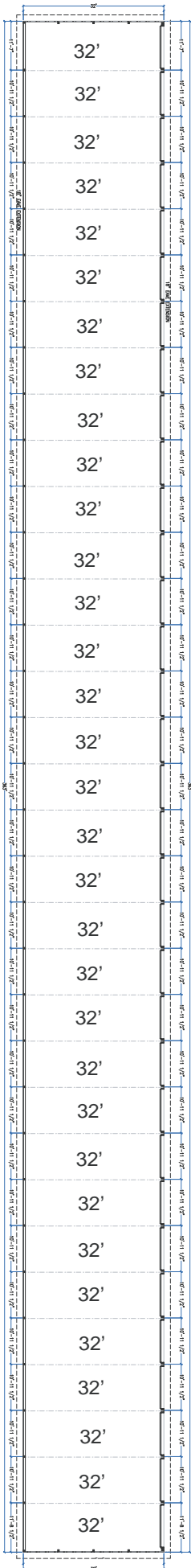
**Pay monthly automatically with a credit card or ACH and receive about 5% off. Or, pay 12 months in advanced in cash or check and receive approx. 5% off.

What we have, that most mini storage units don't:
Well Lit Parking Lot
 Our mini storage units have bright LED lights surrounding the entire unit, and are located right next to the very busy Highway 76. The better the lighting, the more secure. And there are plenty of sets of eyes keeping a watch out for suspicious behavior. The road we are on is a common route where patrol cars do drive by's for security purposes. Our main office is also across the street, so we keep a close eye during business hours.

Water Access
 There is an outdoor well station where you can hook up to running water (non winter months). It makes it easy to give your vehicle or equipment a quick wash before putting away, or fill your water tank before going on a trip.

RV Dump Station
 There is an RV dump station on site that runs directly to our holding tank to dispose of your waste.

Easy Access
 We have a double culvert driveway access and gravel all the way around the building so you can avoid having to back in or out of the facility. We also have units with larger than normal driveway spaces to aid in backing your equipment in and out of your unit.

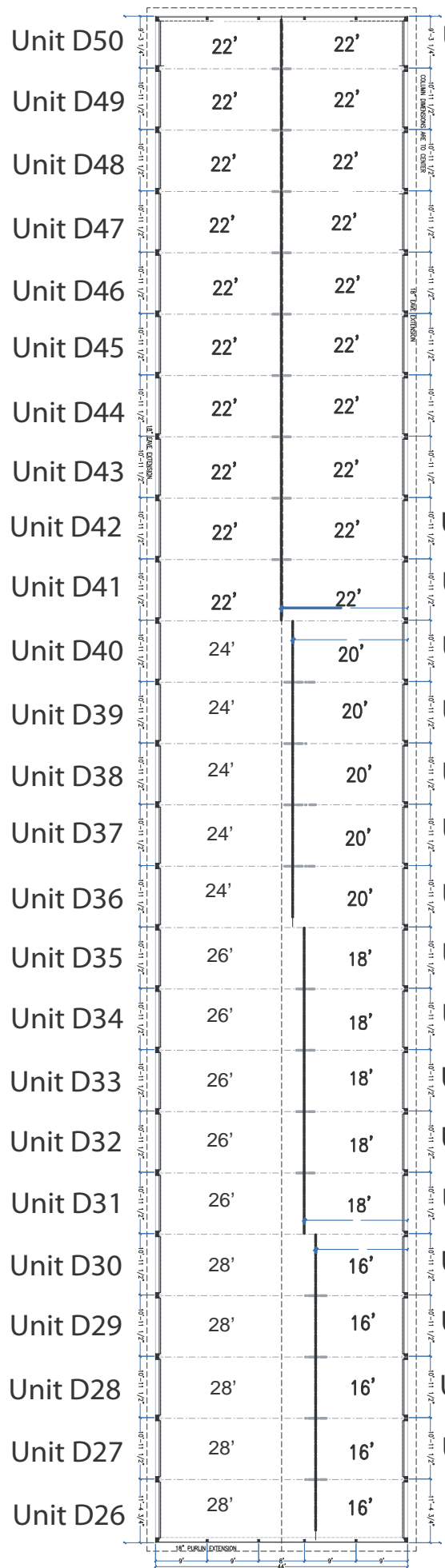


- Unit F33
- Unit F32
- Unit F31
- Unit F30
- Unit F29
- Unit F28
- Unit F27
- Unit F26
- Unit F25
- Unit F24
- Unit F23
- Unit F22
- Unit F21
- Unit F20
- Unit F19
- Unit F18
- Unit F17
- Unit F16
- Unit F15
- Unit F14
- Unit F13
- Unit F12
- Unit F11
- Unit F10
- Unit F9
- Unit F8
- Unit F7
- Unit F6
- Unit F5
- Unit F4
- Unit F3
- Unit F2
- Unit F1

BUILDING F



FREE Power for Trickle Charger!
 All units in building F come with a 5 amp outlet for trickle charger use.
 15 amp also available for an extra charge. Please call for current rates.



- Unit D25
- Unit D24
- Unit D23
- Unit D22
- Unit D21
- Unit D20
- Unit D19
- Unit D18
- Unit D17
- Unit D16
- Unit D15
- Unit D14
- Unit D13
- Unit D12
- Unit D11
- Unit D10
- Unit D9
- Unit D8
- Unit D7
- Unit D6
- Unit D5
- Unit D4
- Unit D3
- Unit D2
- Unit D1

BUILDING D



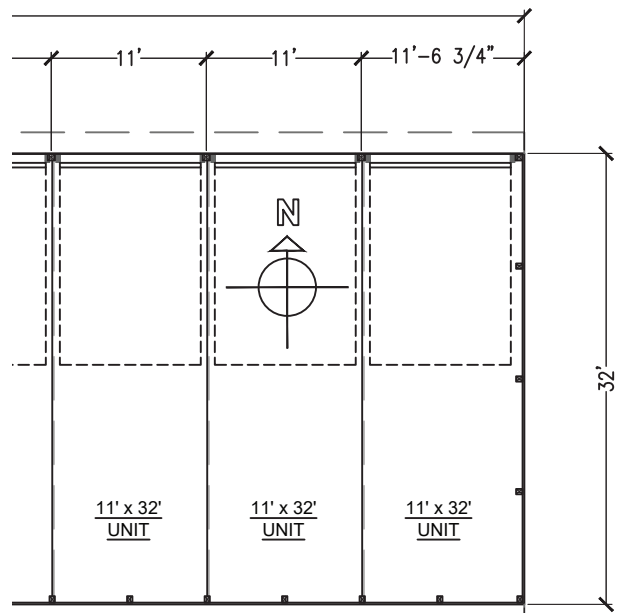
Cold Mini Storage Building G

PH: (920) 931-0017 FAX: (208) 275-1357
 Email: Stacy.Perry@CustomCages.com

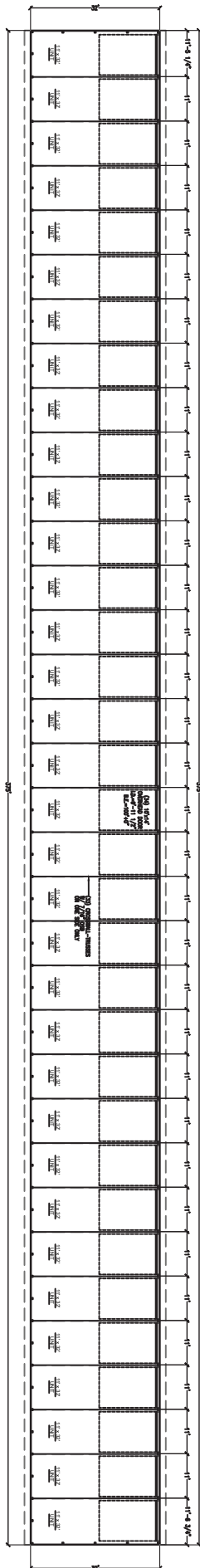
Sizes and Rates Bldg G - 14' Tall Doors!				
Depth	Width	Door Height	In Person Payment Rate*	ACH / Credit Card or 12 mo Advance Save 5%**
32'	11'	14'	\$150	\$143
**Pay monthly automatically with a credit card or ACH and receive about 5% off. Or, pay 12 months in advanced in cash or check and receive approx. 5% off.				

5 Amp 500W Trickle Charger Outlet and LED lights included!

Building G features extra tall doors to fit your RV or boat with tall windshield. Also includes and outlet to keep your battery trickle charged all season as well as LED motion sensor lights on the inside. All units for building G are the same size on the inside.



- Unit G34
- Unit G33
- Unit G32
- Unit G31
- Unit G30
- Unit G29
- Unit G28
- Unit G27
- Unit G26
- Unit G25
- Unit G24
- Unit G23
- Unit G22
- Unit G21
- Unit G20
- Unit G19
- Unit G18
- Unit G17
- Unit G16
- Unit G15
- Unit G14
- Unit G13
- Unit G12
- Unit G11
- Unit G10
- Unit G9
- Unit G8
- Unit G7
- Unit G6
- Unit G5
- Unit G4
- Unit G3
- Unit G2
- Unit G1





24/7 Security Camera Surveillance on Entire Premise



Breezewood Rentals now has 24/7 security camera surveillance on the entire Neenah storage campus. We have cameras pointing in virtually every direction looking at all of the entry/exit points as well as the overhead storage doors themselves. These high end cameras are state of the art, infrared (can see at night), and have forensic zoom capabilities. You will not find this level of security at most other facilities.

These are not just fake "deterrent" cameras, but actually record all activity in the area 24/7 to not only deter but to aid in law enforcement. In addition, we have a close relationship with the Winnebago County Sheriff who does drive by patrols and constantly monitors for suspicious activity.