

Breezewood Rentals, LLC

Heated Shop and Storage Rental Application

CREDIT AUTHORIZATION

1. I/We (the borrower/s and/or lessee/s) have applied for credit from Breezewood Rentals, LLC (company). As a part of the application process, Breezewood Rentals, LLC may verify information contained in my/our application and in other documents required in connection with this transaction.
2. I/We authorize you, the company, to utilize information including, but not limited to: social security number, employment, income, assets, credit history documents including bankruptcy and/or foreclosure documentation as deemed necessary.
3. I/We hereby authorize Breezewood Rentals, LLC to act on the company's behalf to obtain and verify such information listed above. Furthermore, I/We authorize Breezewood Rentals, LLC. or designated entity engaged by the Company, to pull and re-pull credit as deemed necessary to satisfy our obligation with the Company.
3. A copy of this authorization may be accepted as an original.

Applicant's Signature Date

Applicant's SS#

Applicant's Name

Applicant's Phone Number

Applicant's Drivers License Number

Applicant's Home address

Applicant's business Name (if applicable)

Please answer the following questions so we can get a feel for what type of space you are looking for:

Intended use of space: _____

Usage Level (circle one): Storage only Moderate Usage (<25 hours per week) High Usage (25-50 hours per week)

Heat requirements (circle one): 40 degrees 65 degrees Other _____

How long do you anticipate renting space at our facility? _____

How many 14' x 48' units are you interested in? _____

Would you want the units separated, or would you want them to be one big open space? _____

On a scale of 1 to 10, how interested are you in renting from us? _____

What is your preferred move in date? _____

If we run out of room in our current building, would you be interested in renting the next building being built in the spring of 2012? _____

Please fax this completed credit application to (208) 275-1357

or mail to 7260 Commerce Plaza Drive, Neenah WI 54956

Breezewood Rentals llc

Heated Shop Spaces

7261 Commerce Plaza Drive - Neenah, WI 54956

PH: (920) 486-5467 FAX: (208) 275-1357

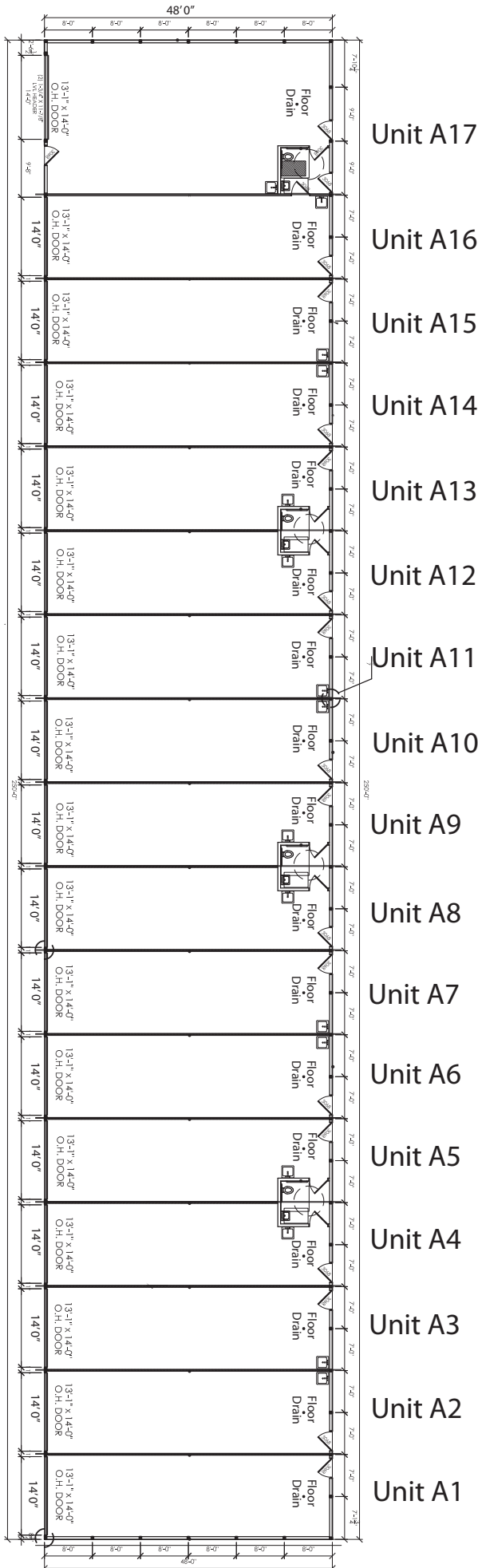
Email: CustCages@aol.com

Breezewood Rentals heated shop and storage spaces are perfect for your startup or other small business or hobby shop as well as a place to park your collectable car, boat, or RV. All units come with in floor heat, floor drain, and a wash sink. All units also have bathroom access (common, shared, or single tenant depending on how many units you occupy). With 800 amps of total on site power, each unit has a 6 breaker electrical panel (3 phase, 220, and 120 available) to service any of your electrical needs. All units are approximately 14' x 48' - or 672 sq. ft. with 16' ceilings. Demising walls are removable, so if you want to combine two or more units into one big open unit - no problem.

Based on intended usage, we have several flat rate rental options to choose from. Flat rate rental puts your mind at ease because heat, electric, water, taxes, snow plow etc. is all included. No need to guess what your expenses are going to be which can be a big headache for any small business. Terms are one year minimum with 90 days notice required thereafter. Here are the following usage categories and rates:

Usage Type	Avg. Min. Heat Level	Usage	Flat Rent Rate*
Low Usage, Low Heat	40 deg.	Storage Only	\$295/mo
Low Usage, High Heat	65 deg.	Storage Only	\$315/mo
Moderate Usage, Low Heat	40 deg.	<25 Hrs. per Week	\$325/mo
Moderate Usage, High Heat	65 deg.	<25 Hrs. per Week	\$340/mo
High Usage, Low Heat	40 deg.	25-50 Hrs. per Week	\$345/mo
High Usage, High Heat	65 deg.	25-50 Hrs. per Week	\$365/mo
Custom usage/temperature ratings are available per customer basis.			
*Rates are for annual usage and cannot be changed on a monthly basis.			

Additional Heated units are being built in the Spring of 2015. Please email us to get on our waiting list.



Located right next to Brezewood Heated Shop Rentals, Brezewood Mini Storage is a great solution to your cold storage needs with many sizes to choose from. 3 months minimum rentals, 2 months advanced deposit required.

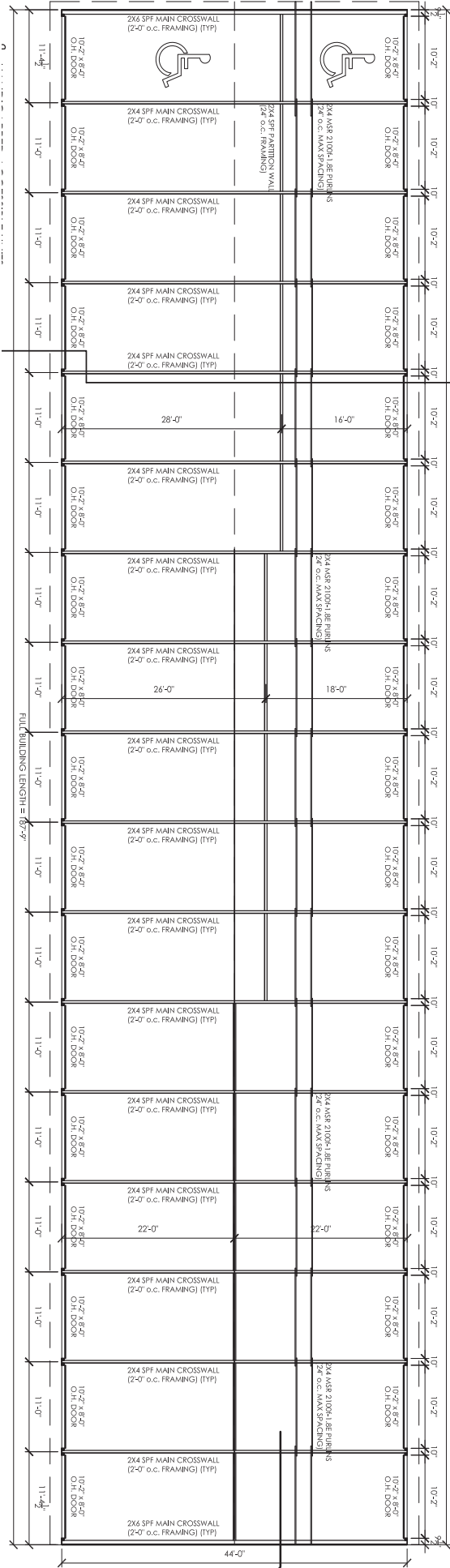


7261 Commerce Plaza Drive - Neenah, WI 54956

PH: (920) 486-5473 FAX: (208) 275-1357

Email: CustCages@aol.com

Unit B34
Unit B33
Unit B32
Unit B31
Unit B30
Unit B29
Unit B28
Unit B27
Unit B26
Unit B25
Unit B24
Unit B23
Unit B22
Unit B21
Unit B20
Unit B19
Unit B18



Unit B17
Unit B16
Unit B15
Unit B14
Unit B13
Unit B12
Unit B11
Unit B10
Unit B9
Unit B8
Unit B7
Unit B6
Unit B5
Unit B4
Unit B3
Unit B2
Unit B1

Sizes and Rates Bldg B			
8' Tall Doors			
Depth	Width	Door Height	Monthly Rate
10'	11'	8'	\$45
12'	11'	8'	\$52
14'	11'	8'	\$57
16'	11'	8'	\$60
18'	11'	8'	\$63
20'	11'	8'	\$65
22'	11'	8'	\$68
24'	11'	8'	\$70
26'	11'	8'	\$72
28'	11'	8'	\$77
30'	11'	8'	\$83
32'	11'	8'	\$88
34'	11'	8'	\$94
36'	11'	8'	\$99
44'	11'	8'	\$120

Sizes and Rates Bldg D and F			
10' Tall Doors			
Depth	Width	Door Height	Monthly Rate
16'	11'	10'	\$62
18'	11'	10'	\$65
20'	11'	10'	\$67
22'	11'	10'	\$70
24'	11'	10'	\$72
26'	11'	10'	\$74
28'	11'	10'	\$79
32'	11'	10'	\$90

What we have, that most mini storage units don't:

Well Lit Parking Lot
Our mini storage units have bright LED lights surrounding the entire unit, and are located right next to the very busy Highway 76. The better the lighting, the more secure. And there are plenty of sets of eyes keeping a watch out for suspicious behavior. The road we are on is a common route where patrol cars do drive by's for security purposes. Our main office is also across the street, so we keep a close eye during business hours.

Water Access
There is an outdoor well station where you can hook up to running water (non winter months). It makes it easy to give your vehicle or equipment a quick wash before putting away, or fill your water tank before going on a trip.

RV Dump Station
There is an RV dump station on site that runs directly to our holding tank to dispose of your waste.

Easy Access
We have a double culvert driveway access and gravel all the way around the building so you can avoid having to back in or out of the facility. We also have units with larger than normal driveway spaces to aid in backing your equipment in and out of your unit.



Site Layout

